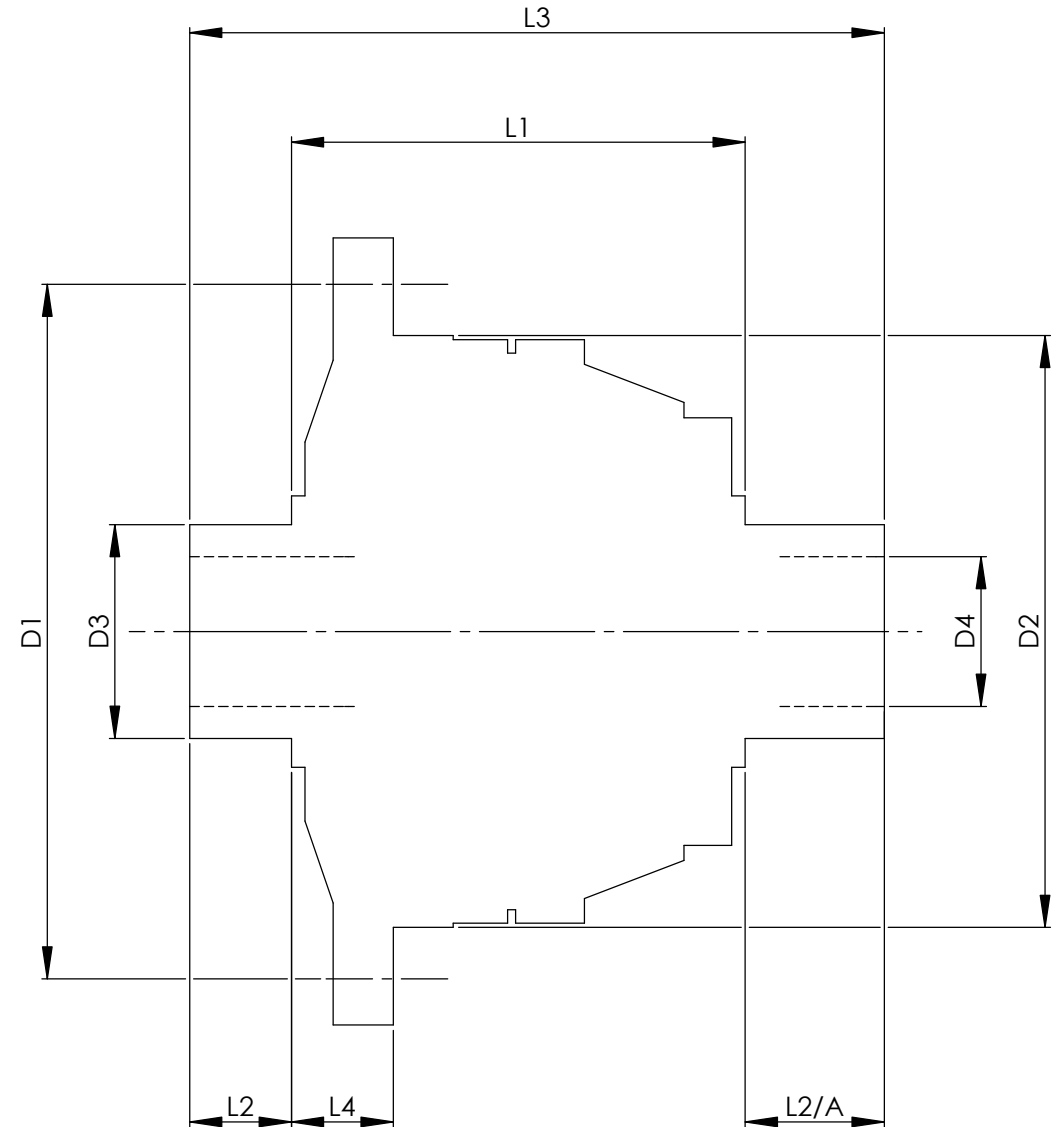


		INCH	MM
CROWN WHEEL BOLT PCD	D1	5.900	150
No. OF BOLTS		12	12
THREAD / THRO' HOLE		0.418	10.6
CROWN WHEEL SPIGOT DIA	D2	5.041	128.0
BEARING DIA	D3	1.5755	40.0
BEARING DISTANCE	L1	4.089	103.9
SPIGOT LENGTH	L2	0.962	24.4
	L2/A	0.970	24.6
OVERALL LENGTH	L3	6.021	152.9
BEARING/CROWN WHEEL	L4	0.505	12.8
BORE	D4	1.1065	28.1
DRIVE SHAFT SPLINE:-			
No. OF TEETH		26	
PITCH		1 MOD.	
TYPE			
PRESSURE ANGLE		45 DEG	



TITLE F.W.D. DIFF DATA SHEET.
SCALE 1:1 U.O.S. SHEET 1 OF 1
<b>Drg. No.</b> QDF13J

**Quaife Design & Development.**

IF IN DOUBT, ASK.

THIS DRAWING OR DESIGN IS STRICTLY CONFIDENTIAL & THE COPYRIGHT THEREIN IS THE EXCLUSIVE PROPERTY OF R.T. QUAIFF ENGINEERING LTD. AND MAY NOT BE USED COPIED OR EXHIBITED WITHOUT THEIR WRITTEN PERMISSION.

FINISH. MACH.	GRIND@G
LIMITS. FRACT. ± 1/64"	
DEC. ± 0.005"	
MATERIAL.	
TREATMENT.	
ISSUE. 01 DATE. 24.5.05	
DRAWN BY. M.L.M.	
<b>Used In.</b> VOLVO S60	